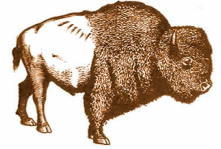




# \*\*\* WILD GAME \*\*\*



PRICES SUBJECT TO CHANGE

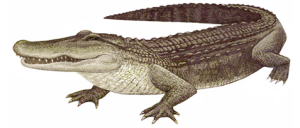
| Frzn   | Chill  | DR= Durham Ranch brand             |
|--|--------|------------------------------------|
| <b>Buffalo Roasts - USDA **ALL NATURAL**</b> |        |                                    |
| 706425                                       | 704175 | DR Tenderloin 189A 5/6# ea, 12 per |
| 706275                                       | 704075 | DR Ribeye 112A 7/12# ea, 6 per     |
| 706400                                       | 704150 | DR Striploin 1x1 6/10# ea, 4 per   |
| 706420                                       | 704182 | Packer Tenderloin 189A 8 per       |
| 706280                                       | 704082 | Packer Ribeye 112A 4 per           |
| 706405                                       | 704154 | Packer Striploin 1x1 5 per         |
| 706325                                       | 704100 | Shortloin 10/16# ea, 3 per cs      |
| 706150                                       | 704025 | Export Rib 10/15# ea, 3 per cs     |
| 706025                                       | 704000 | Btm Rnd Flats 10/12# ea, 3 per cs  |
| 706510                                       | 704230 | Top Sirloin cc 6/8# ea, 8 per cs   |
| 706450                                       | 704200 | Top Round 10/16# ea, 3 per cs      |
| 706250                                       | 704050 | Knuckle Peeled 5/6# ea, 4 per cs   |
| 706125                                       |        | Cross Rib R/T 12/16# ea, 4 per cs  |
| 706300                                       |        | Roast BRT 3/4# ea, 9 per cs        |
| 706100                                       |        | Chuckeye 12/16# ea, 4 per cs       |
| 706555                                       |        | Eye of Rnd Nude 4/5# ea, 8 per cs  |
| <b>Buffalo Steaks - USDA **ALL NATURAL**</b> |        |                                    |
| 708050                                       |        | Coulotte Stk 8oz, 20 per cs        |
| 708075                                       |        | Cube Stk 4oz, 40 per cs            |
| 708352                                       |        | T-Bone Stk 16oz, 10 per cs         |
|  |        | T-Bone Stk cut to size             |
| 708433                                       |        | Top Sirloin Stk 8oz cc, 20 per cs  |
|  |        | Top Sirloin Stk cc cut to size     |
| 708400                                       |        | Tenderloin 1189A Stk 8oz, 20 per   |
|  |        | Tenderloin 1189A Stk cut to size   |
| 708325                                       |        | NY Stk 8oz, 20 per cs              |
|  |        | NY Stk cut to size                 |
| 708225                                       |        | Ribeye Stk 8oz, 20 per cs          |
|  |        | Ribeye Stk cut to size             |
| 708101                                       |        | Flat Iron 8oz, 20 pc per 10# case  |
| 708150                                       |        | Medallion 8/9oz                    |
| <b>Wild Boar Frzn ** ALL NATURAL**</b>       |        |                                    |
| 726325                                       |        | Saddle B/I 5/10# ea, 6 per ce      |
| 726100                                       | 726445 | Striploin Bnls 1-2# ea, 4 per pk   |
| 726225                                       |        | Leg B/I 8/10# ea, 5 per cs         |
| 726250                                       | 726179 | Leg BRT 5/8# ea, 8 per cs          |
| 726450                                       | 726444 | Tenderloin 1# pkg, 12# cs          |
| 726350                                       | 726443 | Shoulder BRT 5# ea, 8 per cs       |
| 726176                                       |        | Frnchd Rck 2-3# ea, 12 pk per cs   |
| 726050                                       |        | Bacon Slab 2-3# pk, 30# cs         |
| 726425                                       |        | Stew 5# pkg, 10# cs                |
| 726400                                       | 726446 | St Louis Sparerib 3#ea, 30# cs     |
| 726475                                       |        | Trim 44# cs                        |
| 726150                                       |        | Saddle Chop 4-5oz, 2 per, 10# cs   |
|  |        | Saddle Chop cut to size            |
| 726375                                       |        | Smoked Leg BRT 3/6# ea             |
| 726075                                       |        | Shank B/I 4# ea, 8 per cs          |
| 726125                                       |        | Carcass Head On Sknls 50/60# ea    |
| 726550                                       |        | Back Rib                           |
| 726485                                       |        | <b>Patty 4/1 1#pk, 15# bx</b>      |
| 726460                                       |        | Coarse Ground 5# pk, 10# cs        |
| 726465                                       |        | Ground 5# pk, 10# cs               |
| 726030                                       |        | Bellies 46# cs                     |

| Frzn | Chill | Frzn                                     | Chill   | Frzn | Chill      |
|------|-------|--|---|------|------------|
|      |       | <b>Buffalo Ground and Patties - USDA</b> |   |      |            |
|      |       | 972525                                   | Ground 1# Pkgs <b>Retail 12#</b>                |      |            |
|      |       | 710050                                   | Ground 5# Pkgs <b>Foodservice 10#</b>           |      |            |
|      |       | 702000                                   | Bison Shapd 2/1 1# Pk <b>Retail 15#</b>         |      |            |
|      |       | 710000                                   | Bison Shapd 3/1 1# Pk <b>Retail 15#</b>         |      |            |
|      |       | 710100                                   | Oval 2/1 Patty 1# Pk <b>Retail 15#</b>          |      |            |
|      |       | 710125                                   | Oval 2/1 10# bx <b>Foodservice 12#</b>          |      |            |
|      |       | 710230                                   | Old fash. Rnd 2/1 10# bx <b>Foodservice 12#</b> |      |            |
|      |       | 710175                                   | Oval 3/1 1# Pk <b>Retail 15#</b>                |      |            |
|      |       | 710200                                   | Oval 3/1 10# bx <b>Foodservice 12#</b>          |      |            |
|      |       | 710225                                   | Old fash. Rnd 3/1 10# bx <b>Foodservice 12#</b> |      |            |
|      |       | 710335                                   | <b>Retail bag 4/1 8 per pkg 24#</b>             |      |            |
|      |       | 710250                                   | Rnd 4/1 10# bx <b>Foodservice 12#</b>           |      |            |
|      |       | 710280                                   | Rnd 4/1 1# Pk <b>Retail 15#</b>                 |      |            |
|      |       | <b>710275</b>                            | <b>Buffalo Slider 8/1 10.5#</b>                 |      | <b>NEW</b> |
|      |       | <b>Misc Buffalo</b>                      |   |      |            |
|      |       | 708275                                   | Stew 5# Pk, 10# cs                              |      |            |
|      |       | 708250                                   | Stew 1# Pk, 10# cs                              |      |            |
|      |       | 708447                                   | Brochettes 5# Pk, 10# cs                        |      |            |
|      |       | 708175                                   | Buffalo skewers, 100 stick/cs                   |      |            |
|      |       | 706375                                   | Cafeteria Round 40/55# ea                       |      |            |
|      |       | 706560                                   | Flap Meat 40# cs                                |      |            |
|      |       | 702050                                   | Shortrib 3x2 2 per, 12# cs                      |      |            |
|      |       | 706350                                   | Skirt Stk Peeled 5# pk, 50# cs                  |      |            |
|      |       | 706175                                   | Flank Stk 5# pk, 40# cs                         |      |            |
|      |       | 712150                                   | Frankfurters s/c 6/1 10# bx                     |      |            |
|      |       | 706200                                   | Frys 10# bx                                     |      |            |
|      |       | 702100                                   | Tongue 3/4# ea, 35# cs                          |      |            |
|      |       | 706000                                   | Backrib 3# ea, 2 per, 18# cs                    |      |            |
|      |       | 710300                                   | Trim 90% 50# cs                                 |      |            |
|      |       | 712075                                   | Knuckle Bones 40# cs                            |      |            |
|      |       | 712050                                   | Leg Bones 45# cs                                |      |            |
|      |       | 712350                                   | Fat Trim 30# cs                                 |      |            |
|      |       | 702075                                   | Smoked Tongue 2/3# ea                           |      |            |
|      |       | 712325                                   | Smoked Eye of Rnd 3/4# ea                       |      |            |
|      |       | 706075                                   | Brisket Bnls D/O Nude 6/8# ea                   |      |            |
|      |       | 712125                                   | Corned Brisket 6/8# ea                          |      |            |
|      |       | 712275                                   | Buffalo Oxtails 10# bx                          |      |            |
|      |       | 708200                                   | Osso Bucco 1 3/4" thick, 2 per pkg, 10# case    |      |            |
|      |       | 706225                                   | Hanging Tenders 10# bx                          |      |            |
|      |       | 706525                                   | 702125 Tri Tip 2# ea, 20 per, 40# cs            |      |            |
|      |       | <b>Yak</b>                               |   |      |            |
|      |       |  | <b>**ALL NATURAL**</b>                          |      |            |
|      |       | 700403                                   | Ground Patty 3/1 1# pk                          |      |            |
|      |       | 700416                                   | Chuck Tender 24/8oz needled                     |      |            |
|      |       | 700417                                   | Ribeye Stk 12oz, 16 per cs                      |      |            |
|      |       | 700420                                   | Sirloin BRT 3-5# ea                             |      |            |
|      |       | 700410                                   | Top Sirloin 24/8oz                              |      | <b>NEW</b> |
|      |       | <b>Llama</b>                             |   |      |            |
|      |       | 700425                                   | <b>**ALL NATURAL**</b>                          |      |            |
|      |       | 700427                                   | Sirloin Tip rst 3-4lbs each                     |      |            |
|      |       | 700426                                   | NY Steaks 24/8oz                                |      |            |
|      |       | 700440                                   | Ground Patty 3/1 1# pk                          |      |            |
|      |       |  | Rib Eye Steak 20/8oz                            |      | <b>NEW</b> |





# \*\*\* WILD GAME \*\*\*



PRICES SUBJECT TO CHANGE

| Frzn  | Chill  |   |
|---|--------|---|
| <b>Foie Gras</b>                              |        |   |
| 700315  | 700481 | Moullard 'A' Bella                                    |
| 700375  | 700380 | Moullard 'B' Bella                                    |
| 700460  |        | Moullard 'C' Bella                                    |
| <b>Fulton Valley Chicken ** ALL NATURAL**</b> |        |   |
| 451026  | 451025 | Free Range 14/3up<br>Free Range Airline 20lb 12-16dbs |
|   | 465815 | Free Range B/S Breast 12/16oz dbl                     |
| 451028  | 451027 | Organic Chickens 14/3up                               |
|   | 465810 | Organic B/S Chicken breast 12/16d                     |
| 451031  | 451030 | Veg Fed 3up   |
| <b>Fancy Quality Game Birds</b>               |        |   |
| 729050  |        | Chukar Partridge 14/17oz                              |
| 450050  |        | Capons 7-8# ea 8 per cs                               |
|   | 453750 | Smkd Chicken Whole 8 per cs                           |
| 452403  |        | Rocky Jr 4 - 4 1/2# ea, 10 per cs                     |
| 729575  |        | Quail Semi Bnls 4/5oz ea 36/cs                        |
| 729420  |        | Quail B/I 4oz ea 36/cs                                |
| 729460  |        | Quail Brst Bnls 1.5oz 54/cs                           |
|   | 729550 | Quail Semi Bnls Jumbo 5/6oz 60/cs                     |
| 728975  |        | Guinea Fowl 2 3/4#, 8 per cs                          |
| 729000  |        | Guinea A/L Brst 15/17oz                               |
| 729425  |        | Poussin 16/22oz, 24 per cs                            |
| 729413  |        | Poussin Semi Bnls 13/16oz, 12 per                     |
| 728825  |        | Geese 8/10  |
| 728830  |        | Geese 10/12   |
| 728835  |        | Geese 12up  |
| 728900  |        | Goose Leg B/I 10-12oz, 4 per pk                       |
| 728925  |        | Goose Brst Smkd 1# ea                                 |
| 728875  |        | Goose Brst Bnls 2# ea                                 |
| 503400  |        | Wild Turkey 8/-14#                                    |
| 503405  |        | Wild Turkey 4-7# ea                                   |
| 729667  |        | Squab 13-17oz 24 per cs                               |
| 729725  |        | Squab Bnls Brst 4/6oz ea(double)                      |
| 728050  |        | Duck Brst Bnls 12/16oz                                |
| 728155  |        | Duck Brst Bnls Sknls #1                               |
| 728175  |        | Duck Brst Smoked 10/12oz, 6 per pkg                   |
| 728150  |        | Duck Brst Bnls Small                                  |
| 728025  |        | Duck Bones 25# box                                    |
| 728780  |        | Duck Prosciutto 3/4# ea                               |
| 728085  |        | Magret Brst Bnls 1.4# ea, 60#                         |
| 728115  |        | Magret Smoked   |
| 728750  | 728725 | Muscovy Hen 4# avg, 8 per cs                          |
| 728700  | 728675 | Muscovy Hen Brst Bnls 14-16oz                         |
| 728650  | 728625 | Muscovy Drake 7 1/2#, 8 per                           |
| 728600  | 728575 | Muscovy Drake Brst Bnls2#,10 per                      |
| 728400  |        | Duck Liver  |
| 728660  |        | Muscovy Leg B/I 13-15oz                               |
| 728685  |        | Moullard Leg B/I 13-15oz, 54 per                      |
| 728205  |        | Rendered Duck Fat 7# pail, 42# cs                     |
| 729125  |        | Pheasant 2-3# ea, 10 per case                         |
| 729175  |        | Pheasant Breast A/L 8/10oz 2 per                      |
| 729150  |        | Pheasant Breast A/L 6/8oz 2 per                       |
| 729132  |        | Pheasant Brst Bnls 6/8 2 per                          |
| 729210  |        | Smoked Pheasant Brst 8oz, 24 per                      |
| 729300  |        | Smoked Whole Pheasant 2 1/2-3#                        |
| 729315  |        | Pheasant Trim 25# box                                 |
| 729330  |        | Pheasant Bones 25# box                                |
| 503390  |        | Tur Duc hens 1/15lb                                   |
| 503395  |        | Tur Duc hen rolls 4/4lb                               |
| <b>346600 NEW</b>                             |        | <b>Poulet Rouge Chix 6-305lb</b>                      |

| Frzn   | Chill | Duncan Cervena Elk **ALL NATURAL** Cont.     |
|--|-------|--|
|  |       | 754190 754195 Saddle B/I Half                |
|  |       | 754050 752025 Stripln Dnvr NY 2/3# ea, 8 per |
|  |       | 754200 752150 Loin Bnls TTS 4# ea, 12 per    |
|  |       | 756300 Trim 60#/cs                           |
| <b>Rabbit ** ALL NATURAL**</b>                 |       |  |
|  |       | 762070 Domstc Whle 2 1/3# 12 per cs          |
|  |       | 764000 Imprtd Whole 2-3 1/4# 44# cs          |
|  |       | 762150 Hind Leg B/I tray pack 10lbs          |
|  |       | 762205 Loin Bnls 2.2lb tray 33lb case        |
|  |       | 762250 Domestic saddles BI                   |
|  |       | 762300 Trim 44# cs                           |
| Frzn   | Chill |  |
| <b>Goat ** ALL NATURAL**</b>                   |       |  |
|  |       | 750000 Whole Skin off 30-40# ea              |
| <b>Caiman(Bolivian Crocodile) **New Item**</b> |       |  |
|  |       | 734200 Tail Fillet 1# pk, 10# cs             |
|  |       | 734205 Tail tenderloin 1# pk, 10# cs         |
|  |       | 734215 Mixed Large Cuts 1# pk,10# cs         |
| <b>Alligator ** ALL NATURAL**</b>              |       |  |
| Wild   | Farmd |  |
|  |       | 734025 734325 Sirloin 1# pk Tail Meat        |
|  |       | 734050 734350 Sirloin 5# pk Tail Meat        |
|  |       | 734000 734300 Leg & Body Meat 5# pk          |
|  |       | 734100 734375 Tenderloin 5# pk Tail Meat     |
| <b>Snake ** ALL NATURAL**</b>                  |       |  |
|  |       | 766000 Rattlesnake B/I 2dn, 15# cs           |
|  |       | 766050 Rattlesnake B/I 2up, 15# cs           |
|  |       | 766060 Rattlesnake Jumbo, 15# cs             |
|  |       | 766150 Python Meat Bnls 7# cs                |
| <b>Frog ** ALL NATURAL**</b>                   |       |  |
|  |       | 842600 Legs 4/6 per lb, 30# cs               |
|  |       | 842650 Legs 6/8 per lb, 30# cs               |
|  |       | 842550 Legs 2/4 per lb, 30# cs               |
| <b>Turtle ** ALL NATURAL**</b>                 |       |  |
|  |       | 700525 Semi Bnls 5# pail                     |
|  |       | 700500 Boneless 5# pail                      |
| <b>Maple Leaf Ducks</b>                        |       |  |
|  |       | 728125 Duck Brst Bnls 5-6oz                  |
|  |       | 728135 Duck Brst Bnls 8-10oz                 |
|  |       | 728250 Duck Halves Roasted                   |
|  |       | 728375 Duck Confit 6#/cs                     |
|  |       | 728475 Duck Whole 5# ea                      |
| <b>Durham Ranch 100% Certified Berkshire</b>   |       |  |
|  |       | 367776 367775 loin bnls CC                   |
|  |       | 367826 367825 Butt Bnls                      |
|  |       | 367791 367790 Rack 8 bone no chine           |
|  |       | 367820 367822 Belly bnl w/ rib meat          |
|  |       | 367811 367810 Tenderloin                     |
|  |       | 367875 367877 Hindshank                      |
|  |       | 367878 Front shanks                          |
|  |       | 367830 Cheek meat                            |
|  |       | 367788 shoulder ribs                         |
|  |       | 635570 Ham bnls 2/15lb                       |
|  |       | 635560 smoked ham whl BI 2/18lb              |
|  |       | 366760 Loin Bnls c/c                         |
|  |       | 367425 Rack Frenched                         |
|  |       | 367595 Steamship Round                       |
|  |       | 367760 Tenderloin 415                        |
|  |       | 368205 Pork Back Rib Pcs                     |



# \*\*\* WILD GAME \*\*\*



PRICES SUBJECT TO CHANGE

| Frzn  | Chill                             |
|---|-----------------------------------|
| <b>Dale's Wild Game Sausages, Salamis and Jerky</b> |                                   |
| 712425  | Natural Buffalo Sausage 10oz rope |
| 712400  | Buffalo Smoked Sausage 5/1        |
| 712375  | Buffalo Seasoned Sausage 4/1      |
| 726025  | Wild Boar Smoked Sausage 5/1      |
| 726000  | Wild Boar Seasoned Sausage 4/1    |
| 724025  | Venison Smoked Sausage 5/1        |
| 724000  | Venison Seasoned Sausage 4/1      |
| 730025  | Antelope Smoked Sausage 5/1       |
| 730000  | Antelope Seasoned Sausage 4/1     |
| 738200  | Kangaroo Seasoned Sausage 4/1     |
| 729625  | Duck Smoked Sausage 5/1           |
| 729600  | Duck Seasoned Sausage 4/1         |
| 729275  | Pheasant Seasoned Sausage 4/1     |
| 736000  | Alligator Seasoned Sausage 4/1    |
| 762350  | Rabbit Seasoned Sausage 4/1       |
| 744075  | Ostrich Seasoned Sausage 4/1      |
| 712300  | Buffalo Salami                    |
| 724285  | Venison Salami                    |
| 724100  | Venison Jerky 1oz pkg             |
| 712250  | Buffalo Jerky 1oz pkg             |
| 503420  | Turkey Jerky 1oz pkg              |
| 712000  | Buffalo Beer Sticks 24oz jar      |

| Frzn  | Chill                        |
|---|------------------------------|
| <b>Chateau Royal Gourmet Sausages (retail labeled )</b> |                              |
| 600210  | Chicken Apple w/Cranbrry 3oz |
| 607325  | Lamb Merguez 3oz             |
| 712385  | Buffalo w/Chiptole 3oz       |
| 712410  | Smkd Buffalo w/Burgundy 3oz  |
| 724015  | Venison w/Blueberry 3oz      |
| 726020  | Wild Boar w/Cranberry 3oz    |
| 729280  | Pheasant w/Cognac 3oz        |
| 729610  | Duck w/Orange 3oz            |
| 729620  | Duck w/Foie Gras             |
| 756220  | Elk w/Pear                   |
| 762360  | Rabbit w/Dijon 3oz           |

| Frzn  | Chill                                 |
|---|---------------------------------------|
| <b>Chateau Royal Gourmet Game Filled Raviolis Raw</b> |                                       |
| 880935  | Ravioli Venison 180/.8oz per cse      |
| 880950  | Ravioli Rabbit w/ Wine 180/.8oz       |
| 861725  | Ravioli Duck w/ Basil,Garlic 180/.8oz |
| 880936  | Ravioli Bison 180/.8oz                |
| 880937  | Ravioli Pheasant w/ Hazelnut 180/.8oz |
| 880925  | Ravioli Lobster w/ Lemon Pasta        |

| Frzn                             | Chill                          |
|----------------------------------|--------------------------------|
| <b>Saag's Specialty Sausages</b> |                                |
| 600083                           | Louisiana Hot Link 4/1         |
| 600084                           | Smkd Chicked Apple Sausage 4/1 |
| 600095                           | Bistro Smkd Chic Apple Sausage |
| 600900                           | Bockwurst 4/1                  |
| 601505                           | Bunderfleisch                  |
| 603750                           | Knockwurst                     |
| 605810                           | Chicken Parmesan 4/1           |
| 605825                           | Polish Sausage 4/1             |
| 606800                           | Bratwurst Smkd 3/1             |
| 606900                           | Summer sausage                 |
| 606950                           | Swiss Bockwurst 3/1            |
| 620010                           | Thuringer Beef                 |
| 635265                           | Smoked 3 Pepper Salami         |
| 650075                           | German Bologna                 |
| 650110                           | Landjaeger                     |
| 650250                           | Brunschweiger                  |

| Frzn     | Chill |
|----------|-------|
| 6/2lb cs |       |

| <b>Fabriques Delices Sausages</b>               |                              |
|---|------------------------------|
| 726015  | Wild Boar Hunter w/Apple 4/1 |
| 729615  | Duck Sausage w/Figs 4/1      |
| <b>**Pates available with 3 day lead time**</b> |                              |

| <b>Japanese Wagyu - straight from Japan</b> |                       |
|---|-----------------------|
| 180195                                      | Wagyu 189A Tenderloin |
| 180395                                      | Wagyu Striploin 0x1   |
| 180520                                      | Wagyu Ribeye 112A     |

| <b>KBA Wagyu Style Kobe Beef - American</b> |                                       |
|---|---------------------------------------|
| <b>American Kobe Style BMS 8+</b>           |                                       |
| 180410                                      | 180415 Striploin 0x1 12-13#, 2 per    |
| 180510                                      | 180505 Ribeye 112A 10-12#, 2 per      |
| 180215                                      | 180190 Tendrln 189A 5/6# ea, 2 per    |
| <b>Steakhouse Elite BMS 7dn</b>             |                                       |
| 180400                                      | 180405 Striploin 0x1 12-13#, 2 per    |
| 180501                                      | 180515 Ribeye 112A 10-12#, 2 per      |
| 180210                                      | 180200 Tendrln 189A 5/6# ea, 2 per    |
| 180625                                      | Top Butt Cap 30# cs                   |
| 180630                                      | Top Butt Heart 10# ea, 2 per          |
| 180000                                      | <b>Grnd Patty 2/1 Oval 1# pk 15#</b>  |
| 180075                                      | <b>Grnd Patty 2/1 Ovl Bulk 12# cs</b> |
| 191800                                      | Grnd Chuck 5# pkg, 10# cs             |
| 180665                                      | Chuck Flap Meat 30#cs                 |
| 180290                                      | Sirloin Flap Meat 30# cs              |
| 180600                                      | Shortrib Bl 123A 40#cs                |
| 180615                                      | Shortrib Bnls 123A 40#cs              |
| 180855                                      | Top Rnd Nude 12#, 6 per cs            |
| 180675                                      | Teres Major 3# avg, 5 per cs          |
| 180650                                      | Tri Tip Nude 8# avg, 3 per cs         |
| 180385                                      | Outside Skirt Stk 2/pk, 6pk/cs        |
| <b>180060</b>                               | <b>Wagyu Slider 8/1 10.5# cs</b>      |
| <b>191950</b>                               | <b>Frankfurter 5/1 1# pkg</b>         |
| 180360                                      | Inside Skirt Stk 26# cs               |
| 180350                                      | Hanging Tender 25# cs                 |
| <b>180040</b>                               | <b>DR Ground Patty 2/1</b>            |
|   | <b>S/O = Special Order</b>            |

| <b>Durham Ranch Dry Aged Beef *Prices subject to change*</b>    |                                    |            |
|---|------------------------------------|------------|
| 221000  | Choice Dry Age 0x1 Striploin       | Market     |
| 221700  | Choice Dry Aged Beef Ribeye        | Market     |
|   | Choice Dry Age Shortloin           | S/O Market |
|   | Choice dry Age Export Rib          | S/O Market |
|   | <b>Prime Dry Age Striploin 0x1</b> | S/O Market |
|   | <b>Prime Dry Age Ribeye</b>        | S/O Market |
|   | <b>Prime Dry Age Shortloin</b>     | S/O Market |
|   | <b>Prime Dry Age Export Rib</b>    | S/O Market |
| <b>Now Available all natural dry age beef to order all cuts</b> |                                    | <b>NEW</b> |

| <b>Imported Lamb and Beef</b> |                          |        |
|-------------------------------|--------------------------|--------|
| 403270                        | NZ French Rack 10/12     |        |
| 403275                        | NZ French Rack 12/14     |        |
| 270000                        | Aust Beef 189A 5/up Nude | Market |
| 270425                        | NZ Beef 189A 5up         | Market |

| <b>Retail Labeled Products</b> |                                      |            |
|--------------------------------|--------------------------------------|------------|
| <b>724010</b>                  | <b>Sausage Venison Dales 12/1lb</b>  | <b>NEW</b> |
| <b>712380</b>                  | <b>Sausage Bison dales 12/1lb</b>    | <b>NEW</b> |
| <b>730010</b>                  | <b>Sausage Antelope Dales 12/1lb</b> | <b>NEW</b> |
| <b>756225</b>                  | <b>Sausage Elk Dales 12/1lb</b>      | <b>NEW</b> |
| <b>729626</b>                  | <b>Sausage Duck smk Dales 12/1lb</b> | <b>NEW</b> |



# \*\*\* WILD GAME \*\*\*



PRICES SUBJECT TO CHANGE

**Nueske's**  
401046 Bacon 16/20 10# cs  
402525 Slab Bacon 5# pcs, 50#/cs

|                                     |  |             |              |
|-------------------------------------|--|-------------|--------------|
| <b>Frzn</b>                         | <b>Chill</b>                             | <b>Frzn</b> | <b>Chill</b> |
| <b>Molinari Italian Specialties</b> |  |             |              |
|                                     | 620115 Dry Salami 24/1lb                 |             |              |
|                                     | 620300 Salami Coppa Mild                 |             |              |
|                                     | 620700 Salami Dry Italian wrapped 10/3lb |             |              |
|                                     | 650500 Mortadella 4/7.5lb                |             |              |
|                                     | 650650 Pancetta 5-4lb ea                 |             |              |
|                                     | 620750 Salami sopressata 5/3lb           |             |              |

|                     |                              |     |  |
|---------------------|------------------------------|-----|--|
| <b>Provimi Veal</b> |                              |     |  |
| 330230              | Scallopini 4oz               | MKT |  |
| 340000              | Osso Bucco 1" Fore           | MKT |  |
| 340010              | Osso Bucco 1 1/2" Fore       | MKT |  |
| 341200              | Osso Bucco 2" Fore           | MKT |  |
| 340100              | Osso Bucco 3" Fore           | MKT |  |
| 340050              | KC Chop 10oz                 | MKT |  |
| 341515              | KC Chop 12oz                 | MKT |  |
| 341425              | Rack Chop 10oz               | MKT |  |
| 341600              | Rib Chop Frenchd to Eye 14oz | MKT |  |
| 340150              | Bones Cut 50# cs             | MKT |  |
| 340310              | Breast                       | MKT |  |
| 340750              | Hindshank                    | MKT |  |
| 340800              | Leg Slices 2oz               | MKT |  |
| 340850              | Liver Sliced 3oz             | MKT |  |
| 34900               | Liver Sliced 4oz             | MKT |  |
| 340925              | Liver Whole                  | MKT |  |
| 341000              | Striploin TTS                | MKT |  |
| 341240              | Ravioli Osso Bucco Flavored  | MKT |  |
|                     | 341345 6 Bone Frenchd Rack   | MKT |  |
|                     | 341350 7 Bone Frenchd Rack   | MKT |  |
|                     | 341540 Riblet                | MKT |  |
|                     | 341680 Ribeye 7 Bone         | MKT |  |
|                     | 341700 Shortloin             | MKT |  |
| 341850              | Sweetbread                   | MKT |  |
|                     | 341900 Top Round             | MKT |  |
|                     | 341950 Top Round Trmd        | MKT |  |
|                     | 342000 Top Sirloin Nude      | MKT |  |
| <b>801700</b>       | <b>Demi Glace 16# Tub</b>    | MKT |  |

**SMOKED PRODUCTS**

|               |                                 |
|---------------|---------------------------------|
| 702075        | Buffalo Smoked Tongue           |
| 712325        | Buffalo smoked Eye of Round     |
| 726050        | Wild Boar Smkd Bacon 2-3lb pcs  |
| 726034        | Wild Boar Smkd Bacon 1-2lb      |
| 726375        | Wild Boar Smkd BRT Leg 5lb ea   |
| 724200        | Venison Smoked Roast 5lb        |
|               | 453750 Chicken Whole Smoked     |
| 728925        | Goose Breast Smoked 1lb ea      |
| 728175        | Duck Breast Smoked              |
| 728780        | Duck Prosciutto Muscovy .9lb ea |
| 729210        | Pheasant Breast Smoked          |
| 729300        | Pheasant Whole Smoked           |
| <b>467504</b> | <b>Smoked Chicken Breast</b>    |

|                           |              |
|---------------------------|--------------|
| <b>Frzn</b>               | <b>Chill</b> |
| Colorado Lamb - Rosen     |              |
| Summit Creek Natural Lamb |              |

|             |              |
|-------------|--------------|
| <b>Frzn</b> | <b>Chill</b> |
| <b>DISC</b> | <b>DISC</b>  |
| <b>DISC</b> | <b>DISC</b>  |

**LAMB DOMESTIC ALL NATURAL CHEFS RESERVE BRAND NEW**

|               |   |               |
|---------------|---|---------------|
| <b>414046</b> | Lamb Leg Bnls Mini 8/2.5lb avg                  | <b>MARKET</b> |
| <b>414062</b> | Lamb Leg Semi Bnls 6/8lb avg                    | <b>MARKET</b> |
| <b>414037</b> | Lamb Leg BRT Trimmed 2/16lb avg                 | <b>MARKET</b> |
| <b>414063</b> | Lamb Leg BNLS 6/8lb avg                         | <b>MARKET</b> |
| <b>414193</b> | Lamb Sirloin 6/1.8lb avg                        | <b>MARKET</b> |
| <b>414085</b> | Lamb Loin Split 2x2                             | <b>MARKET</b> |
| <b>414500</b> | Lamb Loin 1x1                                   | <b>MARKET</b> |
| <b>414040</b> | Lamb Loin Bnls Eyes 10/1lb avg                  | <b>MARKET</b> |
| <b>405260</b> | Lamb Flank TTS 10lb bulk                        | <b>MARKET</b> |
|               | <b>414300</b> Lamb Hotel Rack Split 5/8lb up    | <b>MARKET</b> |
|               | <b>414159</b> Lamb Rack 4" CFO 8 bone 8/2.5lb   | <b>MARKET</b> |
|               | <b>414170</b> Lamb Rack Colorado Fr to eye 8/2  | <b>MARKET</b> |
|               | <b>402741</b> Lamb Rack Spider fr to eye 8/1.25 | <b>MARKET</b> |
| <b>414180</b> | Lamb Chuck Square Cut                           | <b>S/O</b>    |
| <b>414650</b> | Lamb Shoulder Bnls Defated 8/4lb                | <b>S/O</b>    |
| <b>414025</b> | Lamb Fore Shanks 10/1lb avg                     | <b>MARKET</b> |
| <b>414020</b> | Lamb Hind Shanks 12/1.3lb avg                   | <b>MARKET</b> |
| <b>405000</b> | Lamb Bones 1/30lb                               | <b>MARKET</b> |
| <b>402750</b> | Lamb Stew 2/5lb                                 | <b>MARKET</b> |
| <b>414160</b> | Lamb Denver Ribs 10lb                           | <b>S/O</b>    |
| <b>410000</b> | Lamb Ground 80/20 2/5lb                         | <b>MARKET</b> |
| <b>405275</b> | Lamb Tongue 10lb                                | <b>S/O</b>    |
| <b>LAMB</b>   | <b>ELYSIAN FARMS</b>                            |               |
| <b>402735</b> | <b>LAMB LOIN B/I BLOCKED 10/5.5LB</b>           |               |
| <b>402736</b> | <b>LAMB LOIN SHOULDER</b>                       |               |

**Culinarte'**

|        |   |
|--------|---|
|        | <b>Glace</b>                              |
| 800001 | Glace de Veau(Veal) 5x1#units, 20#/cs     |
| 800002 | Glace de Canard(Duck) 5x1#units, 20#/cs   |
| 800003 | Glace d'Angeau(Lamb) 5x1#units, 20#/cs    |
| 800004 | Glace de Poulet(Chkn) 5x1# units, 20#/cs  |
| 800005 | Glace de Poisson(Fish) 5x1# units, 20#/cs |
| 800006 | Glace de Porc(Pork) 5x1# units, 20#/cs    |

**USDA Inspected African Lion**

|               |            |            |
|---------------|------------|------------|
| <b>766204</b> | <b>Fat</b> | <b>NEW</b> |
|---------------|------------|------------|

**USDA Inspected Black Bear**

|               |                                    |            |
|---------------|------------------------------------|------------|
| <b>700090</b> | <b>Stew 1 lb pkg</b>               | <b>NEW</b> |
| <b>700110</b> | <b>Fat</b>                         | <b>NEW</b> |
| <b>700030</b> | <b>Bear Chops 3/4" thick 1/pkg</b> | <b>NEW</b> |
| <b>700075</b> | <b>Shoulder BRT</b>                | <b>NEW</b> |
| <b>700000</b> | <b>Bone-in Leg</b>                 | <b>NEW</b> |